

COMBINED NORMAL- AND HIGH- PRESSURE FIRE PUMP



ADVANTAGES

- High performance
- Intuitive operation
- Highly ergonomic
- Low noise emission
- Integrated foam proportioning system
- Optimized pump output characteristics:  
Change of volume at constant RPM results in minimized pressure changes
- Contamination insensitive
- High efficiency
- Rating acc. EN 1028:  
FPN 10-3000 / FPH 40-250  
FPN 10-4000 / FPH 40-250

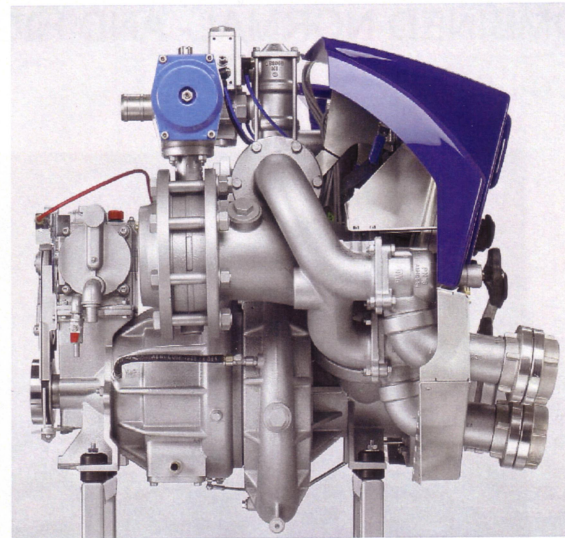
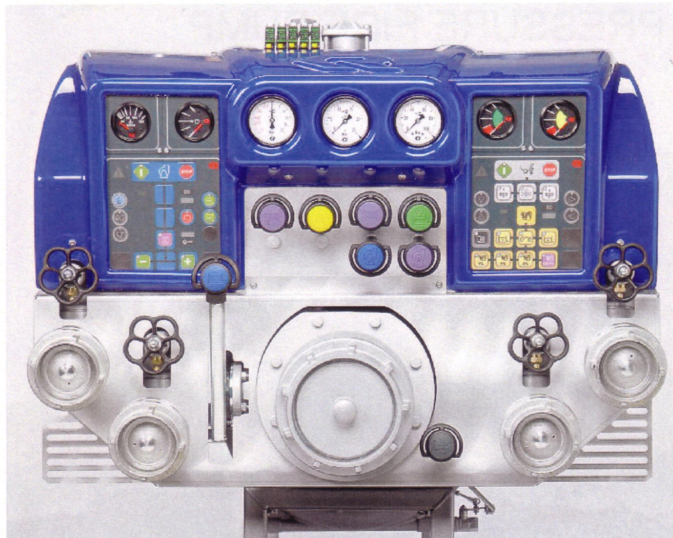
TECHNICAL DATA

- Type:** Combined normal- and high-pressure centrifugal pump  
impellers counter rotating arranged on one single pump shaft
- NP-Pump:** 1-stage: 5.500 L/min – 10 bar
- HP-Pump:** 4-stages: 400 L/min – 40 bar
- Shaft sealing:** Maintenance-free mechanical seal
- Materials:** Corrosion resistant light alloy - anodized,  
Pump shaft: stainless steel
- Pump drive:** Direct via PTO, optional gear box available
- Primer:** Double acting piston pump  
3m suction height in 3 sec.<sup>\*)</sup>  
Pump drive via belt drive from the pump shaft - disengageable

NP: Normal pressure  
HP: High pressure  
\*) Volume of evacuation: 100 Ltr  
Atmospheric pressure: 0,975 bar



# NH55



**Low operation height:**

Screw down valves are on suction inlet level

**Clear vertical structure of:**

Gauges, control and mechanical operation elements

**Inclined display and control areas:**

Safe and easy to read



**Self explanation operation:**

Top - down order of main functions

**Night design:**

Background illuminated control panel

**Intuitive operation:**

Pull & Push



**Available integrated foam systems:**

Around the pump proportioner:

FIXMIX and/or HP-FIXMIX

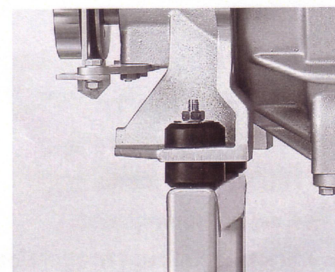
Direct injection foam proportioner:

DIGIDOS 24

**Permanently mounted symbol**

**and ergonomic handle:**

Fit for use with fire fighting gloves



**Low noise emission resulting of:**

No gear box

Rated output at low pump speed

Pump mounting on special rubber elements

ROSENBAUER INTERNATIONAL Aktiengesellschaft  
4060 Leonding, Paschinger Straße 90 AUSTRIA

Tel.: + 43 (0)70 6794-0  
Fax : + 43 (0)70 6794-91  
E-Mail: office@rosenbauer.com  
http://www.rosenbauer.com

Text and illustrations are not binding. The illustrations may show optional extras only available at extra charge. Rosenbauer retains the right to alter specifications and dimensions given here in without prior notice.