

# Evolution<sup>®</sup> 5200 Thermal Imaging Camera



# IT'S AN EVOLUTION – AND IT'S ALL ABOUT SAFETY!

Introducing the new Evolution 5200 Fire Service Thermal Imaging Camera – with Next Generation Performance and New Exclusive Features available only from MSA!

## High Performance Safety

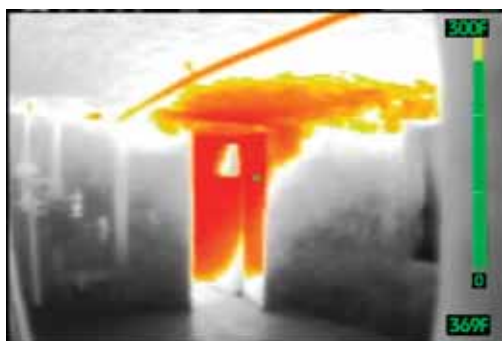
- ▶▶ 320°F High Sense Mode Range – gives high image definition over the widest temperature range of any Fire Service TIC
- ▶▶ Twice the Low Sensitivity in the 320° to +1000°F range, compared to all other Fire Service TICs – for great imaging!

It all adds up to the highest ISDR\* of any Fire Service TIC – with clearer, sharper, more detailed images over the entire temp range.

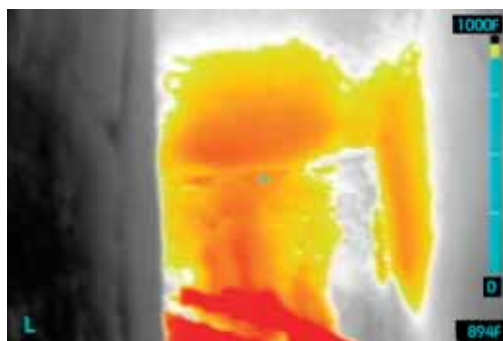
*\*Instantaneous Scene Dynamic Range is the combined value of a sensor's sensitivity and temperature range to determine the number of temperature differences that can be seen at any given instant.*

## Exclusive Features

**New** Heat Seeker PLUS – now providing image detail shading



Heat Seeker PLUS in High Sense Mode:  
Notice multiple heat temperature differences



Heat Seeker PLUS in Low Sense Mode:  
Notice wall and ceiling separation

**Durability – MSA designs, manufactures and tests to existing standards that include:**

- ▶▶ Water/Dust Ingress . . . . . International Standard CEI, IEC 529, IP 67 Classification
- ▶▶ Direct Flame/Heat Exposure. . . . . Simulated NFPA 1981 – 2002 Edition, NFPA 1982–1998
- ▶▶ Vibration . . . . . Edition MIL-STD-810E Category 1 Loose Cargo
- ▶▶ Radio Frequency Interference. . . . . Transport CE/EN 50081–2:1992, EN 50082–2:1992, FCC
- ▶▶ Rollover (Truck Charger). . . . . Part 15 Simulated NFPA 1901–12, 1.7

## Low Cost – High Value

As Fire Service TICs become more affordable, MSA takes the lead by adding new features and increasing performance – while lowering both initial and lifetime costs. The increased value of MSA TICs is realized through expanded TIC uses, time saved and SAFETY – every day!

## Also – Only From MSA:

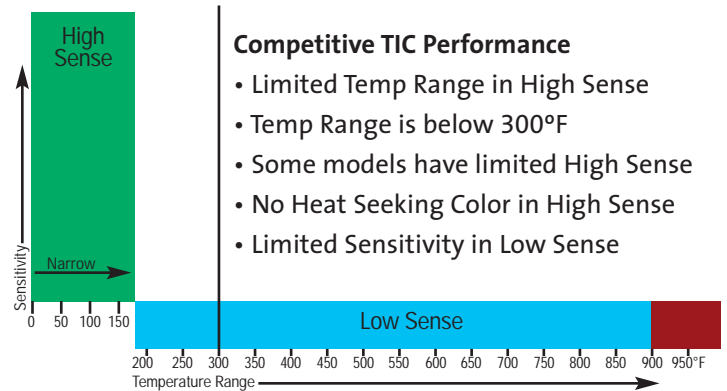
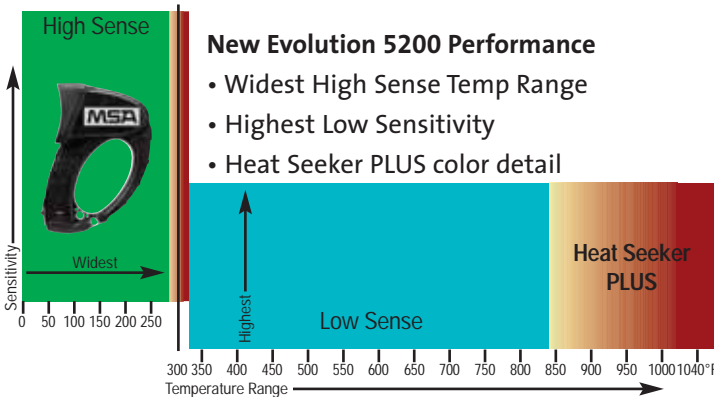
- Instant On
- Instant Mode Switching
- Warnings on all Shut Downs
- Shutter Indicator
- Temp Bar and Digital Temp
- 15% Low Sense Activation



# COMPARISON OF FIRE SERVICE TIC PERFORMANCE

## High and Low Sensitivity

Most TICs generate thermal images in either High Sense or Low Sense modes, depending on the temperature of the scene. High Sense mode delivers the best image quality – but has a limited temperature range. Low Sense mode trades image quality for a wider temp range to keep the TIC working in high heat.



## Evolution 5200 Performance

Only MSA delivers High Sense image quality up to 320°F, the range that 80% of the time matches the temperature range in most structural fires. In addition, only MSA delivers increased sensitivity in Low Sense mode with better high temperature image quality. The shaded color in both High and Low Sense is Evolution 5200's new Heat Seeker PLUS.

## Competitive Performance

The limited High Sense temperature range on competitive TICs means that image quality is lost sooner. Low Sense then becomes the standard operating mode, using only a fraction of the total available sensitivity. In addition, competitive TICs lack Heat Seeking color in High Sense mode, an important tool to determine the presence and direction of the fire as seen in the images below.

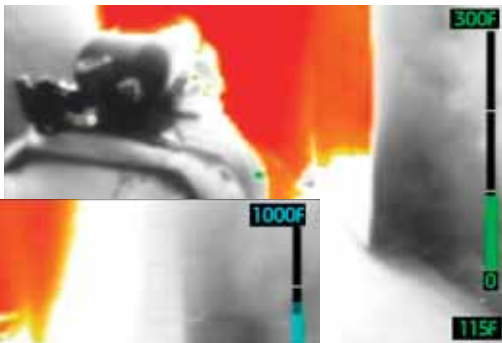
## Evolution 5200 Image Quality

The top image is the Evolution 5200's High Sense mode (indicated by the green temperature symbols). The lower image is the Evolution 5200's Low Sense mode (indicated by the blue temperature symbols). Look closely at these two images. With MSA, both the High and Low Sense scenes show a detailed image – a result of Evolution 5200 expanded performance in both High and Low Sense Mode.

## Evolution 5200 Heat Seeker PLUS

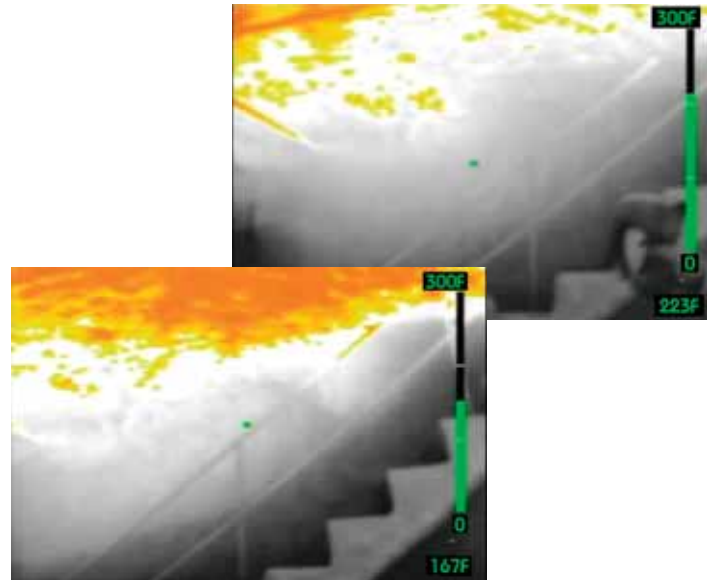
The top image shows how Heat Seeker PLUS in High Sense Mode (indicated by the green temperature symbols) finds the beginning and direction of the fire. The shaded coloring give indications of the changing temperature levels, especially in the second image as it sees the heat levels rising.

Evolution 5200 High Sense Scene



Evolution 5200 Low Sense Scene

Evolution 5200 Heat Seeker PLUS showing fire scene progression

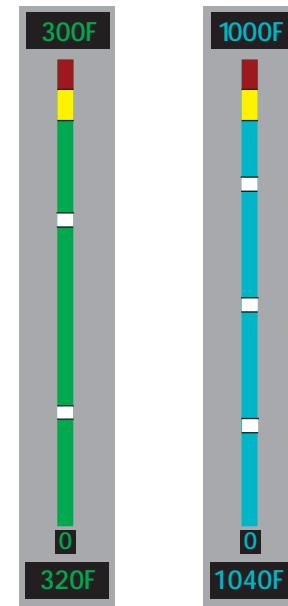
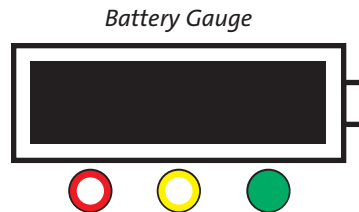


# EVOLUTION 5200 ANSWERS THE "NEW TIC" TRAINING ISSUE:

As Fire Service TICs advance as more useful and versatile tools, TIC Operation and Use Training is a growing concern.

MSA takes the lead in the design of the new Evolution 5200 with consistency of training built in. Fit, form, and function are the same; symbols and warnings are the same; color indicators are the same on both the new Evolution 5200 and its predecessor, the industry leading Evolution 5000. This makes training easier and simpler for both existing Evolution 5000 Departments – and in Mutual Aid situations.

*Example: Both the MSA Evolution 5000 and the New Evolution 5200 use the same Battery Gauge and Temperature Bar Gauge as shown here.*



## Professional Training

In addition, Professional Training on TIC Operation and Use goes a long way in developing a solid understanding of a TIC's Safety Features and Functions. Your MSA Fire Service Distributor can recommend TIC Training Programs from independent and objective training organizations to help supplement your TIC training needs.

## New from MSA – Reflective Label ID Kits



These HIGHLY REFLECTIVE Write-On Labels will make TIC accountability easier – and provide additional reflectivity on the top and sides of your Evolution 5200. Each Label Kit contains five sets of four labels in bright red, orange, yellow, green and blue. Labels are easily written on with a permanent marker. (MSA P/N 10062184)

*For ordering information, please see Bulletin 3400-50-MC, Evolution 5200 Ordering Information and Assemble-To-Order Matrix.*

**Note:** This Bulletin contains only a general description of the products shown. While uses and performance capabilities are described, under no circumstances shall the products be used by untrained or unqualified individuals and not until the product instructions including any warnings or cautions provided have been thoroughly read and understood. Only they contain the complete and detailed information concerning proper use and care of these products.



**Corporate Headquarters**  
P.O. Box 426, Pittsburgh, PA 15230 USA  
Phone 412-967-3000  
[www.MSAFire.com](http://www.MSAFire.com)

**Fire Customer Service Center**  
Phone 1-877-MSA-FIRE  
Fax 1-800-967-0398

**MSA Canada**  
Phone 1-800-MSA-2222  
Fax 905-238-4151

**MSA Mexico**  
Phone 52-55 21 22 5770  
Fax 52-55 5359 4330

**MSA International**  
Phone 412-967-3354  
Fax 412-967-3451

**Offices and representatives worldwide**  
For further information:

