



Simply.
More.
Safety.

Assembly Instructions – Version 1.5

AMFE Mounting Kit Cabinet Top

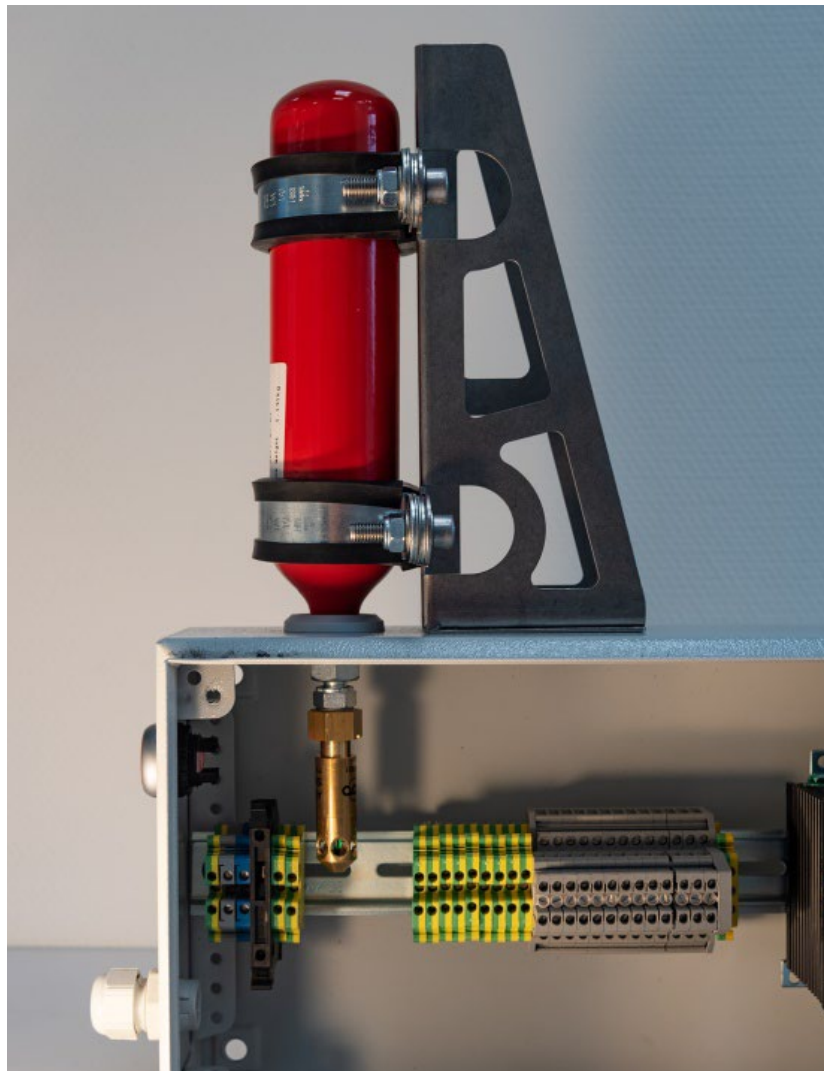


Table of Content

1.	Material Numbers and purpose	3
2.	General Safety Instructions	3
3.	Description	4
4.	Mounting Examples.....	5
5.	What is in the package	5
6.	Tools and time required	6
7.	Assembly Instructions	6
8.	Disclaimer	9
9.	Attachments (drilling tables)	9

1. Material Numbers and purpose

These brackets are serving the purpose of installing the AMFE product line cylinder on top of an electric cabinet or a technical box. Normally, this is needed when installation space inside the box or cabinet is limited or the activation head would otherwise be located too far down inside the cabinet to quickly and effectively detect the activation temperature.

There are two versions of bracket sets, small and large:

JOB Mat. Nr.

100661 Bracket set for AMFE cylinders sizes 0, 1 and 2




100662 Bracket set for AMFE cylinders sizes 3, 4 and 5

2. General Safety Instructions

The AMFE is an industrial product which must be handled with care and following the instructions as lined out in this manual.

BEFORE handling products of the AMFE line, these instructions and safety guidelines have to be read and understood by all people handling and/or working with these products.

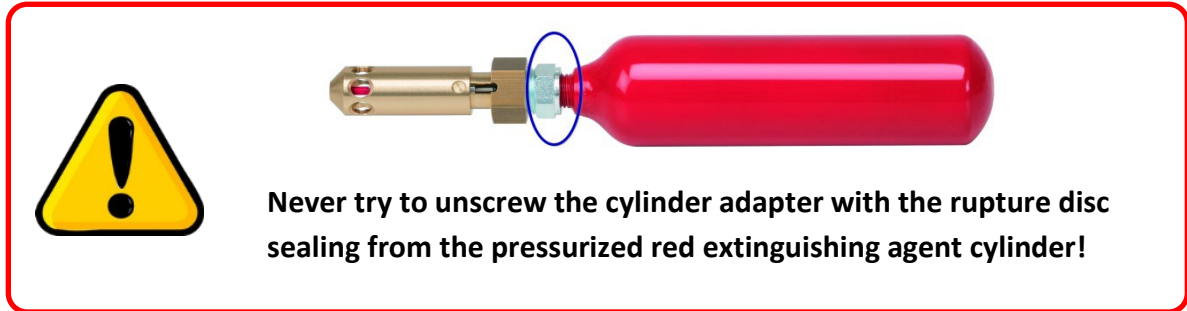
Assembly, installation, service and maintenance shall only be carried out by technically knowledgeable personnel.

	Always handle the AMFE and cylinders with care!
	Do not drop it!
	Wear safety glasses when handling and/or installing the AMFE!

This instruction contains no information about general or special knowledge of fire extinguishing systems. It is advised to read and understand the latest version of the manual for the AMFE series before installing the product.

In addition to following the instructions of this manual, all locally applicable safety regulations have to be obeyed. The manufacturer cannot be held responsible for damages resulting from failure to use the AMFE products as intended.

Cylinders releasing the (pressurized) extinguishing agent could get cold due to the sudden change of pressure during activation. Wait a suitable time after activation (> 2 min) before touching the cylinder and the AMFE head.



3. Description

The Mounting Kit for Cabinet tops allows easy installation of the AMFE product line when only limited space is available inside an enclosure that needs to be protected. The cylinders containing the extinguishing agent are placed outside the actual protected volume / enclosure, whilst the activation head of the AMFE product series (AMFE, S-AMFE or R-AMFE) is placed inside, able to react thermally (like a sprinkler would) on temperatures from an emerging fire at the earliest possible time, opening the attached cylinder to distribute the suppression agent.



Picture: application example

4. Mounting Examples



5. What is in the package

1 x holding bracket (either small or large)

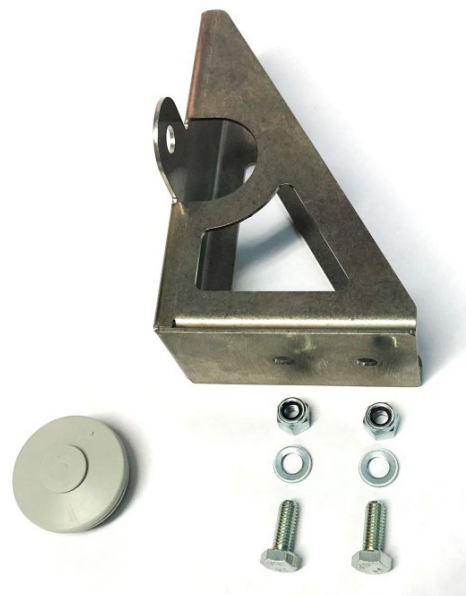
1 x dust cap for cylinder

2 x lag bolt

2 x washers

2 x self-locking nuts

(see picture at the right)



To use the bracket with the AMFE series cylinders, the separately available holding brackets shall be used.

6. Tools and time required

- Electric drilling machine
- Suitable drill, depending on the size (6,6mm or 10,5mm) as well as a 32mm drill (see drilling tables in the attachment for details)
- sandpaper or file
- Measuring tape or similar
- 2 x wrenches metric M10 (10 mm)
- Cutter knife

A person familiar with similar activities should need not more than 5 minutes for installing the AMFE Mounting Kit onto a cabinet.

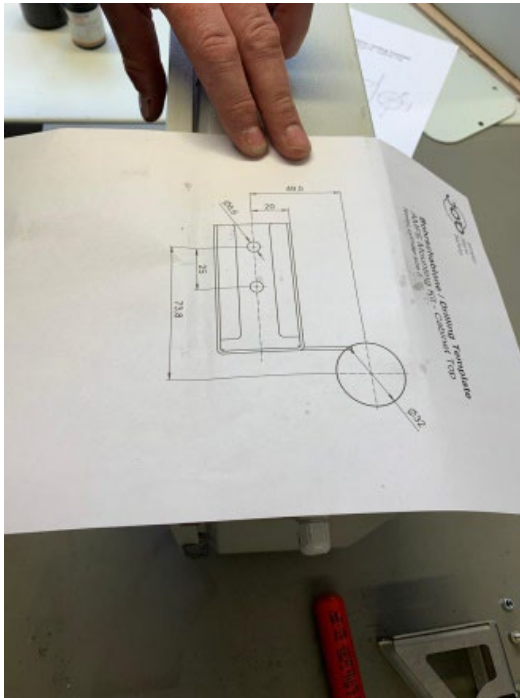
Attention: to fix the cylinder to the Mounting Kit for Cabinet-Tops the separate Holding bracket set for the respective cylinder size is required (the mounting bracket).

7. Assembly Instructions

- 1.) Prepare the **AMFE Mounting Kit parts**, the **pre-assembled AMFE head with cylinder** and the matching **AMFE bracket set, small or large**.



- 2.) Use the drilling template (see attachment) to find measurements and positions. Drill the three holes accordingly.



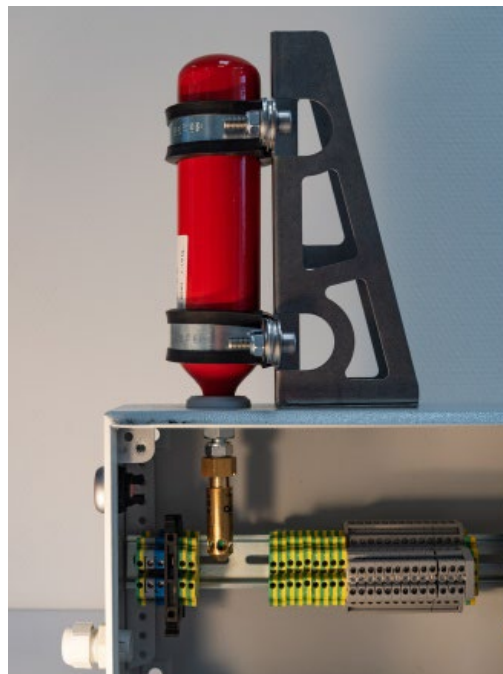
- 3.) Position the holder and use bolt, washer and self-locking nut to mount the holder to the cabinet.



- 4.) Cut small hole in sealing and place the dust cover in the hole.



- 5.) Place the AMFE with its activation head through the dust cover and fix the AMFE with the bracket(s) to the holder.



Attention: The number of brackets needed depends on the size of the cylinder used – please refer to the bracket recommendation section in the AMFE Series – Handling and Safety Instructions.

8. Disclaimer

This product is manufactured by

JOB GmbH
Kurt-Fischer-Str. 30
D-22926 Ahrensburg / Germany
Tel: +49 (0) 4102 2114-0

Email: info@job-group.com

Web: www.job-group.com

The product is “**MADE IN GERMANY**” and manufactured in accordance with all applicable standards and laws for the place of manufacturing.

9. Attachments (drilling tables)

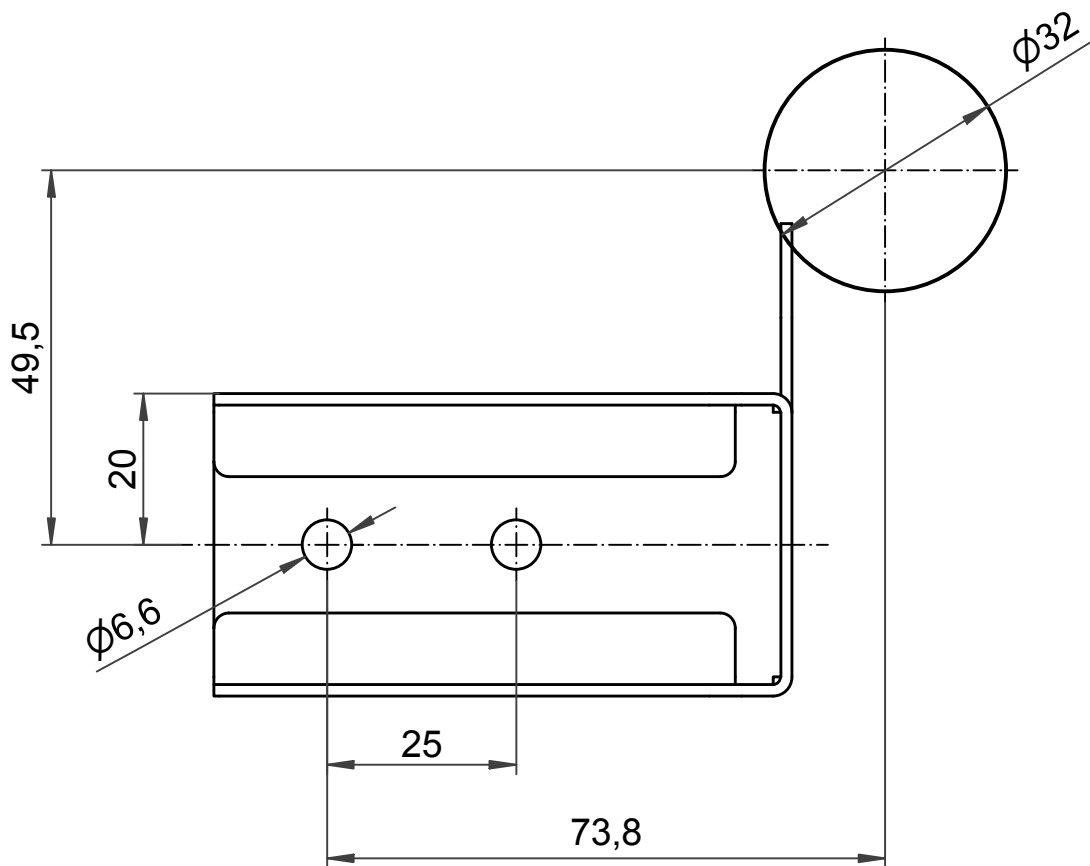


Simply.
More.
Safety.

Bohrschablone / Drilling Template

AMFE Mounting Holder Set - Cabinet Top

Novec cylinder size 0



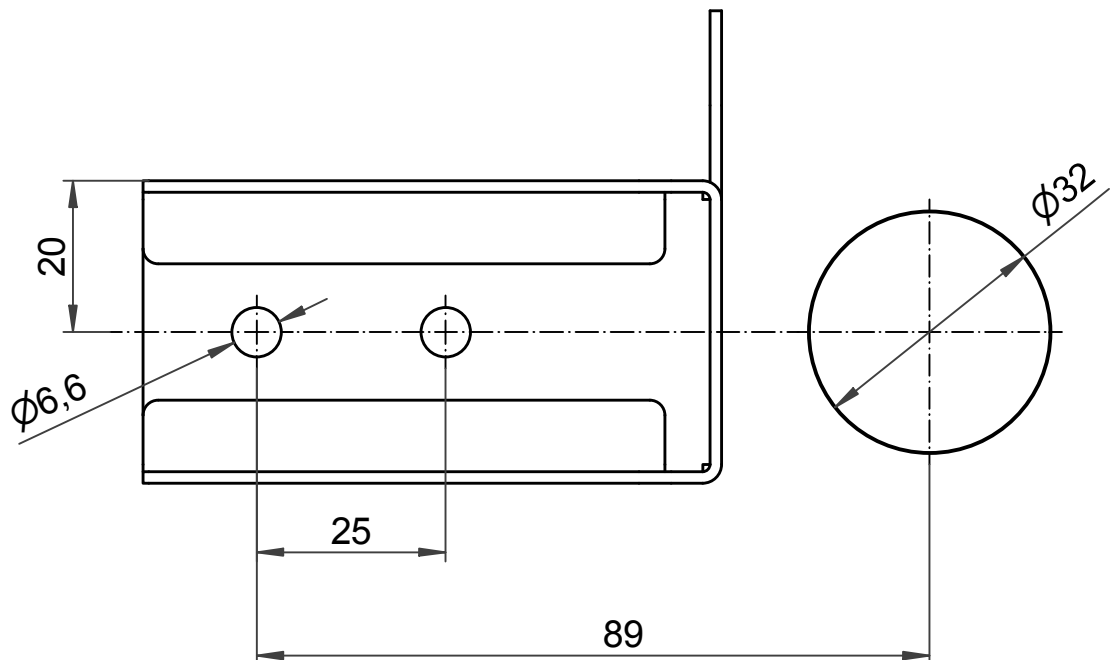


Simply.
More.
Safety.

Bohrschablone / Drilling Template

AMFE Mounting Holder Set - Cabinet Top

Novec cylinder size 1



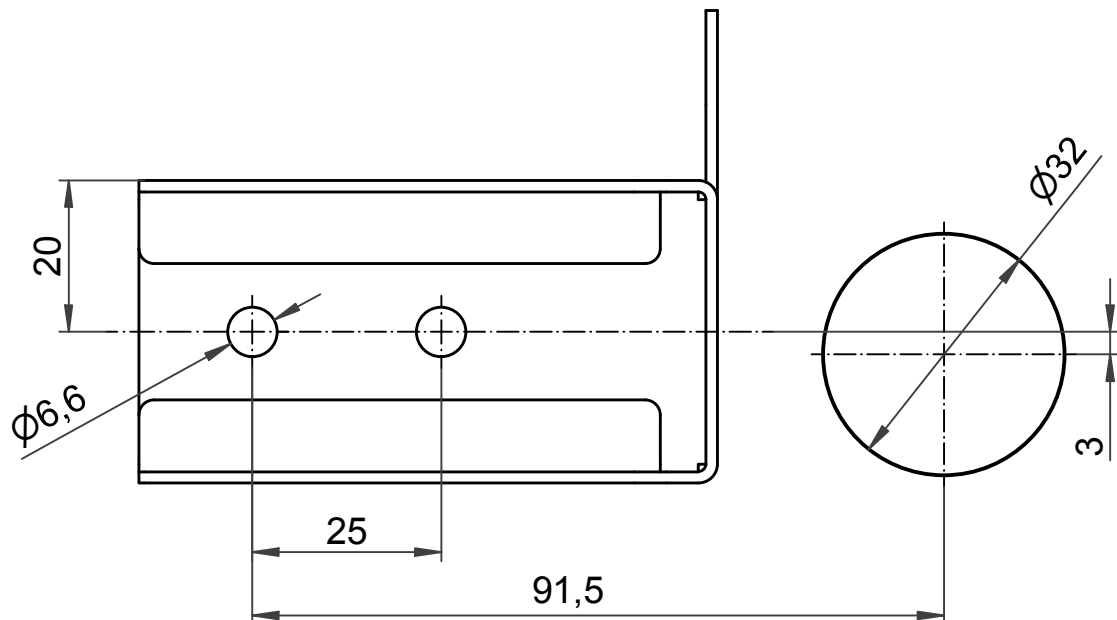


Simply.
More.
Safety.

Bohrschablone / Drilling Template

AMFE Mounting Holder Set - Cabinet Top

Novec cylinder size 2



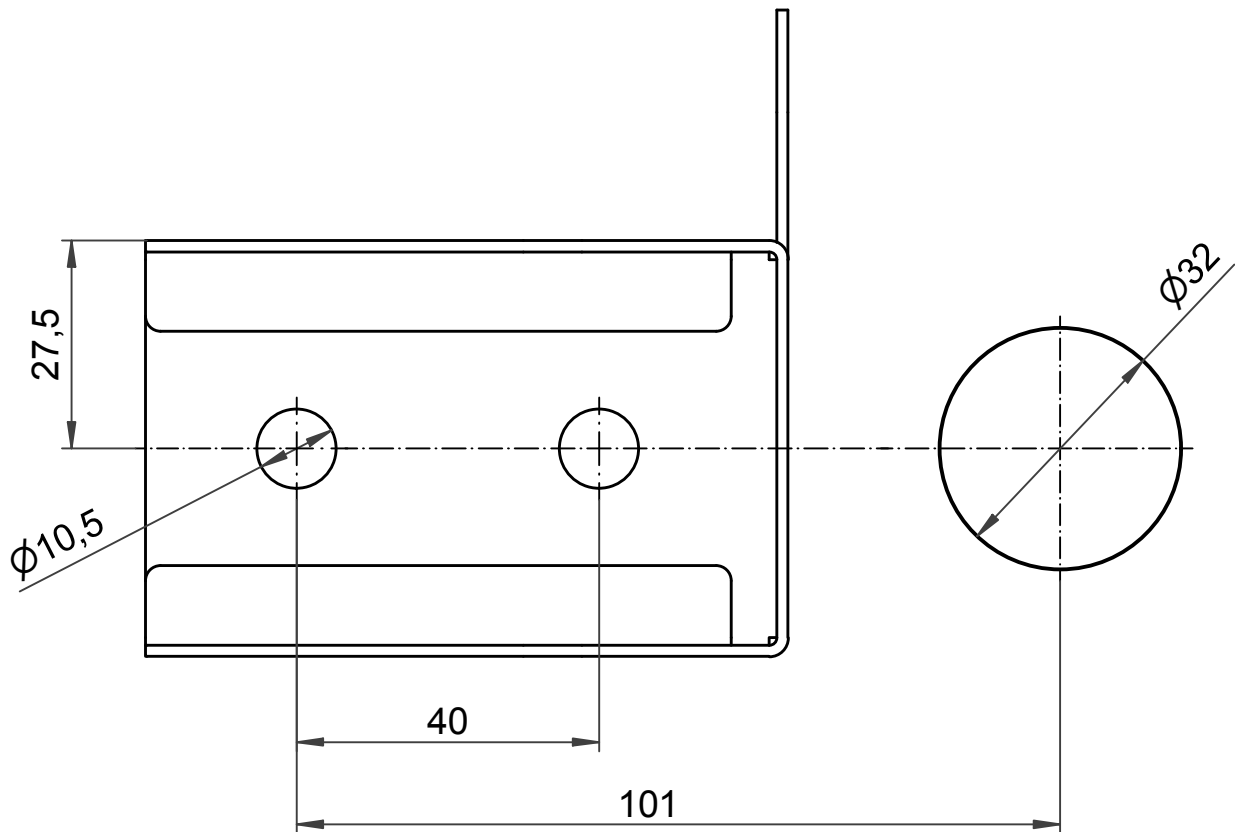


Simply.
More.
Safety.

Bohrschablone / Drilling Template

AMFE Mounting Holder Set - Cabinet Top

Novec cylinder size 3 & 4





Simply.
More.
Safety.

Bohrschablone / Drilling Template

AMFE Mounting Holder Set - Cabinet Top

Novec cylinder size 5

